

Campbell M Gold

Hypnosis, Subliminal, and Empowerment Programs

Campbell M Gold

ArcDoc(oev); ArcAni(oev); DipPre; BSY(T.E)
BSYA(Par); BSYA(Irid); BSYA(CUR.Hyp)

**Specializing in Hypnosis, Subliminal,
and Empowerment Programs**

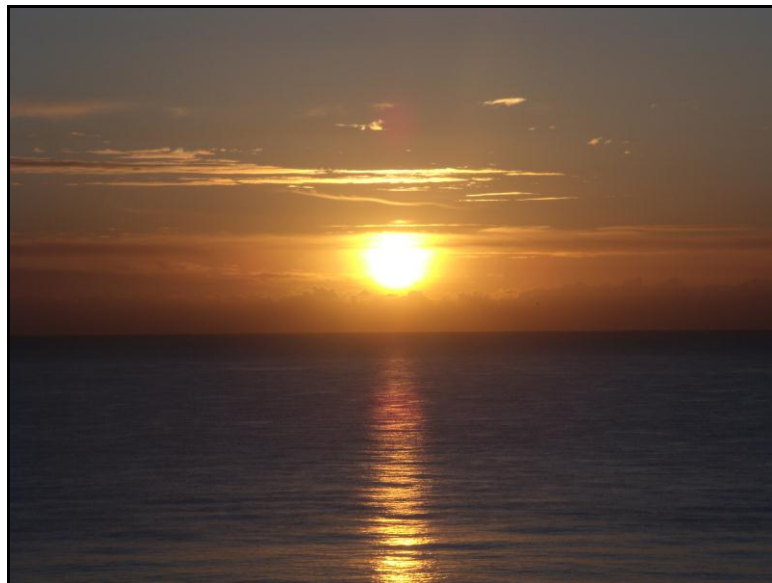
Tele/Fax: 01293 613 699

Mob: 07932 366 828

Email: veritas@uplink.fsnet.co.uk

Website: <http://campbellmgold.com>

INTENSIVE HEALING PROGRAMS



*The gentle convergence of sound, voice,
and (in some titles) inaudible affirmations
are designed to activate the relaxing,
transforming, and healing power
of your subconscious mind...*

by

Campbell M Gold

Introduction

"There are NO incurable diseases!!!"

That's what Christian D Larson believes, and that is what he presents in his 1912 book, "*How To Stay Well*".

Larson contends that that all disease comes from the violation of one or more of the "laws of life", and consequently all diseases can be cured by bringing mind and body back again into harmony with those laws that have been violated - and with this in mind we developed our selection of Intensive and Enhanced Healing Programs.

Our suite of Healing Programs use an exciting and unique combination of voice directed hypnosis, nature sounds, music ambiance, and inaudible subliminal elements to promote and augment your natural healing processes - and the results can be startling. Even if you fall asleep during the program the results are the same.

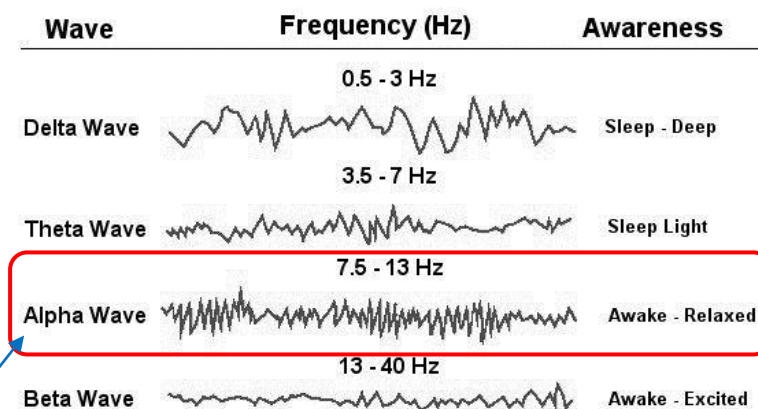
The advanced digital recording technique, developed by the author, uses multi-tracked and interleaved sound-segments (nature sounds and classical music) in conjunction with inaudible subliminal elements (voice). However, the programs are completely safe and the listener is fully conscious and in control at all times.

Sea and Stream

The specially prepared nature sounds of sea and stream play an important part, in relaxation and activating the power of the subconscious mind, as they gently and naturally stimulate alpha wave brain activity.

Sound	Response
Sea	Creates a gentle yet dramatic empowerment and healing response with associated cell replacement
Stream	Creates an invigorating empowerment and healing response with associated cell replacement
Interleaved Sea and Stream	Creates a more intense empowerment and healing response with associated cell replacement

Brain Wave Patterns



An Alpha brain pattern appears when you are wakeful and where there is a relaxed and effortless alertness. Consequently, this is a good state to be in to maximise creative visualization, auto-suggestion, and hypnosis and subliminal techniques.

As the amount of your Alpha waves increase you will feel less stress and anxious; consequently, this improves the strength of your immune system - stress has a very negative impact on your immune system.

Additionally, if an individual wants to be "more creative" they should use techniques whereby they increase their levels of Alpha waves

Many life coaches teach that if an individual wants to have more "peak performance" in the various areas of their life, they should learn how to increase their levels of their Alpha waves.

Consequently, nature sounds with their inherent Alpha Wave stimulating effect can be very therapeutic and this is put to effective use in all of our Programs.

--()--

The Subconscious Mind

The key to the effectiveness of personal empowerment, transformation, and healing lies in unlocking the power of your subconscious mind.

It's all in your Subconscious Mind - within your subconscious mind is the unlimited power to attract health, abundance, joy, and happiness - in fact, anything that you desire, no questions asked.

Your Subconscious Mind is Completely Impartial - your subconscious mind does not distinguish between right or wrong, good or bad - it simply says "Yes" and manifests accordingly.

Your Subconscious Mind cannot be Fooled - beware that you cannot fool your subconscious mind. Consequently your conscious and subconscious minds must be in complete agreement for the power of your subconscious mind to be released and for that which you desire to be manifested. This is the key which unlocks the power of your subconscious mind - your subconscious only accepts what you really feel to be true, and the dominant idea is always accepted by your subconscious mind - thus, the dominant idea to be proffered should be health, not sickness; wealth, not poverty, etc.

Affirmations Program your Subconscious Mind and Make it All Happen - affirmations are used to program the subconscious mind. However, the affirmations must also be carefully chosen and presented, because the subconscious mind cannot be fooled.

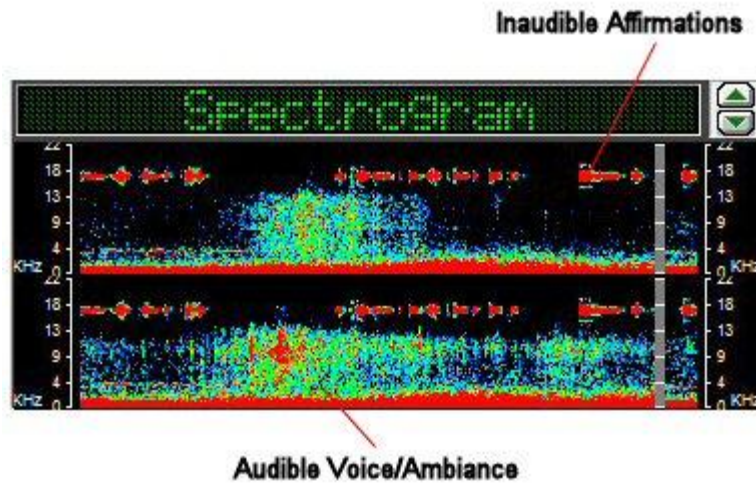
This is where our Special Reserve Programs come in - the gentle convergence of sound and the inaudible voice elements are designed to produce the desired results quickly and easily. As you immerse yourself in the sounds and drift off into a relaxed state, your subconscious mind will readily accept the affirmations/dialogue, and will immediately set in motion cause and consequence which will result in the promotion and augmentation of your natural empowering, transforming, and healing processes.

--()--

Subliminal Elements

Where is the Subliminal Message in a Recording?

In our programs with subliminal elements, positive subliminal affirmations or dialogue is recorded in the 18 KHz Band (see below):



Although the messages are inaudible they are readily picked up and acted upon by your subconscious mind.

Additionally, the nature sounds and music ambience do not interfere, in any way, with the subliminal messages or their receptivity by your subconscious mind.

What do the Subliminal Messages contain?

The subliminal elements contain positive affirmations or dialogue pertinent to the individual product title.

--()--

INTENSIVE HEALING PROGRAMS

Our suite of intensive healing programs promotes the relaxing, transforming, and healing power of your subconscious mind, and they can be used independently or in association with other healing, medicinal, or relaxation therapies.

Affirmations

Please see the individual product pages on our site (<http://campbellmgold.com>) for the affirmations used in each title.

Format

Each program is available as an immediately downloadable mp3 file.

The Healing Programs can be listened to any time to just relax, to meditate and visualise, and to augment and accelerate the transformation, and healing processes.

--()--

Induction/Supplementary Programs

The induction programs should be listened to daily, and the supplementary programs are used on an ad hoc basis to augment and accelerate the healing progress.

--()--

INTENSIVE HEALING PROGRAM TITLES

Intensive Healing Program 1 (Induction)

Voice Guided no Subliminal Elements
with Zen Ambience

(ih_voice_no_sublim.mp3)

This Intensive Healing **induction** program uses voice, music ambience (Zen), and nature sounds (sea and stream), to deeply relax you and then through guided visualisation your subconscious mind is empowered to invoke and augment a natural healing process.

This program does **not** contain any subliminal elements.

Listen to the program daily, especially just before going to sleep, to deeply relax and initiate the healing response that you desire.

The audible dialogue will guide you into a deep state of relaxation and through the guided visualisation you will invoke the healing power of your subconscious mind.

For optimum results this program should be listened to in its entirety.

Even if you fall asleep during the program the positive results will still manifest.

(Running Time approximately 50 minutes)

--()--

Intensive Healing Program 2 (Induction)

Voice Guided with parallel Subliminal Counterpart
with Zen Ambience

(ih_voice_and_sublim.mp3)

This Intensive Healing **induction** program uses voice, music ambience (Zen), and nature sounds (sea and stream), to deeply relax you and then through guided visualisation your subconscious mind is empowered to invoke and augment a natural healing process.

Additionally there is an inaudible subliminal track which echoes the guiding voice - this subliminal approach dramatically increases the effectiveness of the program and effects direct communion with your subconscious mind.

Listen to the program daily, especially just before going to sleep, to deeply relax and to initiate the healing response that you desire.

The audible dialogue will guide you into a deep state of relaxation and through the guided visualisation you will invoke the power of your subconscious mind.

The parallel inaudible subliminal voice will greatly increase the effectiveness of the program as you are audibly guided.

For optimum results this program should be listened to in its entirety.

Even if you fall asleep during the program the positive results will still manifest.

(Running Time approximately 50 minutes)

--()--

**Intensive Healing
Program 3
(Induction)**
**Subliminally Guided with no audible voice
with Zen Ambience**
(ih_sublim_only.mp3)

This intensive healing **induction** program is a unique approach to healing and does not have an audible voice to guide you through the process. Instead there is a subliminal inaudible voice, under the musical ambience (Zen) and nature sounds (sea and stream), that communicates directly with your subconscious mind.

The inaudible voice content is the same as that of the audible voice used in the *Intensive Healing* induction Programs 1 and 2, as is the music ambience and the nature sounds (sea and stream). Again you are deeply relaxed and the subconscious mind is empowered to invoke and augment a natural healing process.

Listen to the program daily, especially just before going to sleep, to deeply relax and initiate the healing response that you desire. You will not hear any dialogue; however, the inaudible subliminal voice will communicate with your subconscious mind and invoke the results that you want.

For optimum results this program should be listened to in its entirety.

Even if you fall asleep during the program the positive results will still manifest.

(Running Time approximately 50 minutes)

--()--

**Intensive Healing
Program 4
(Supplementary)**
**Subliminal Affirmations
under Sea and Zen Ambience**
(ih_affirmation_sea.mp3)

This intensive healing **supplementary** program contains music ambience (Zen) and sea sounds under which a subliminal inaudible voice reiterates the affirmations that were given in the *Intensive Healing* induction programs.

Listen to this program anytime, and just drift with the musical ambience (Zen) and sea sounds.

The inaudible subliminal voice will communicate with your subconscious mind and reinforce the positive affirmations that were given in the other programs.

This program does not need to be listened to in its entirety; the affirmations repeat every nine minutes. So listen for as long or as little as you like. If you listen right through, you will be exposed to five full cycles of the affirmations.

Even if you fall asleep during the program the positive results will still manifest.

(Running Time approximately 50 minutes)

--()--

**Intensive Healing
Program 5
(Supplementary)
Subliminal Affirmations
under Stream and Zen Ambience
(ih_affirmation_stream.mp3)**

This intensive healing **supplementary** program contains music ambience (Zen) and stream sounds under which a subliminal inaudible voice reiterates the affirmations that were given in the *Intensive Healing* induction programs.

Listen to this program anytime, and just drift with the musical ambience (Zen) and stream sounds.

The inaudible subliminal voice will communicate with your subconscious mind and reinforce the positive affirmations that were given in the other programs.

This program does not need to be listened to in its entirety; the affirmations repeat every nine minutes. So listen for as long or as little as you like. If you listen right through, you will be exposed to five full cycles of the affirmations.

Even if you fall asleep during the program the positive results will still manifest.

(Running Time approximately 50 minutes)

--()--

**Enhanced Healing
Program 1
(Induction)
Voice Guided no Subliminal Elements
with Piano Ambience
(eh_voice_no_sublim.mp3)**

This enhanced healing **induction** program uses voice, piano ambience, and interleaved nature sounds (sea and stream), to deeply relax you and then through guided visualisation your subconscious mind is empowered to invoke and augment a natural healing process.

This program does **not** contain any subliminal elements.

Listen to the program daily, especially just before going to sleep, to deeply relax and initiate the healing response that you desire.

The audible dialogue will guide you into a deep state of relaxation and through the guided visualisation you will invoke the healing power of your subconscious mind.

For optimum results this program should be listened to in its entirety.

Even if you fall asleep during the program the positive results will still manifest.

(Running Time approximately 50 minutes)

--()--

**Enhanced Healing
Program 2
(Induction)
Voice Guided
with Parallel Subliminal Counterpart and Piano Ambience
(eh_voice_and_sublim.mp3)**

This enhanced healing **induction** program uses voice, piano ambience, and interleaved nature sounds (sea and stream), to deeply relax you and then through guided visualisation your subconscious mind is empowered to invoke and augment a natural healing process.

Additionally there is an inaudible subliminal track which echoes the guiding voice - this subliminal approach dramatically increases the effectiveness of the program and effects direct communion with your subconscious mind.

Listen to the program daily, especially just before going to sleep, to deeply relax and to initiate the healing response that you desire.

The audible dialogue will guide you into a deep state of relaxation and through the guided visualisation you will invoke the power of your subconscious mind.

The parallel inaudible subliminal voice will greatly increase the effectiveness of the program as you are audibly guided.

For optimum results this program should be listened to in its entirety.

Even if you fall asleep during the program the positive results will still manifest.

(Running Time approximately 50 minutes)

--()--

**Enhanced Healing
Program 3
(Induction)
Subliminally Guided
with No Audible Voice and Piano Ambience
(eh_sublim_only.mp3)**

This enhanced healing **induction** program is a unique approach to healing and does not have an audible voice to guide you through the process. Instead there is a subliminal inaudible voice, under the piano ambience and interleaved nature sounds (sea and stream), that communicates directly with your subconscious mind.

The inaudible voice content is the same as that of the audible voice used in the *Enhanced Healing* induction programs, as is the music ambience and the interleaved nature sounds (sea and stream). Again you are deeply relaxed and the subconscious mind is empowered to invoke and augment a natural healing process.

Listen to the program daily, especially just before going to sleep, to deeply relax and initiate the healing response that you desire. You will not hear any dialogue; however, the inaudible subliminal voice will communicate with your subconscious mind and invoke the results that you want.

For optimum results this program should be listened to in its entirety.

(Running Time approximately 50 minutes)

--()--

**Enhanced Healing
Program 4
(Supplementary)
Subliminal Affirmations
under Interleaved Sea and Stream and Piano Ambience
(eh_affirmation.mp3)**

This enhanced healing **supplementary** program is contains piano ambience and interleaved sea and stream sounds under which a subliminal inaudible voice reiterates the affirmations that were given in the induction programs.

Listen to this program anytime, and just drift with the musical ambience (piano) and sea sounds (interleaved sea and stream).

The inaudible subliminal voice will communicate with your subconscious mind and reinforce the positive affirmations that were given in the other programs.

This program does not need to be listened to in its entirety; the affirmations repeat every nine minutes. So listen for as long or as little as you like. If you listen right through, you will be exposed to five complete cycles of the affirmations.

(Running Time approximately 50 minutes)

--()--

**Directed Healing
Program 1
(Induction)
Voice Guided no Subliminal Elements
with Piano Ambience
(dh_voice_no_sublim_west.mp3)**

This directed healing **induction** program uses voice, piano ambience, and interleaved sea and stream sounds to deeply relax you, and then through guided visualisation your subconscious mind is empowered to invoke and augment a focused, natural, and invigorating healing process.

This program does **not** contain any subliminal elements.

Listen to the program daily, especially just before going to sleep, to deeply relax and initiate the healing response that you desire.

The audible dialogue will guide you into a deep state of relaxation and through the guided visualisation you will invoke the healing power of your subconscious mind.

For optimum results this program should be listened to in its entirety.

(Running Time approximately 40 minutes)

--()--

**Directed Healing
Program 2
(Induction)**
**Voice Guided no Subliminal Elements
with Zen Ambience**
(dh_voice_no_sublim_east.mp3)

This directed healing **induction** program uses voice, Zen ambience, and interleaved sea and stream sounds to deeply relax you, and then through guided visualisation your subconscious mind is empowered to invoke and augment a focused, natural, and invigorating healing process.

This program does **not** contain any subliminal elements.

Listen to the program daily, especially just before going to sleep, to deeply relax and initiate the healing response that you desire.

The audible dialogue will guide you into a deep state of relaxation and through the guided visualisation you will invoke the healing power of your subconscious mind.

For optimum results this program should be listened to in its entirety.

Even if you fall asleep during the program the positive results will still manifest.

(Running Time approximately 40 minutes)

--()--

**Directed Healing
Program 3
(Supplementary)**
**Subliminal Affirmations
with Piano Ambience**
(dh_affirmation_west.mp3)

This directed healing **supplementary** program contains piano ambience and interleaved sea and stream sounds under which a subliminal inaudible voice reiterates the affirmations that were given in the *Directed Healing* induction programs.

Listen to this program anytime, and just drift with the musical ambience (Zen) and sea sounds.

The inaudible subliminal voice will communicate with your subconscious mind and reinforce the positive affirmations that were given in the other programs.

This program does not need to be listened to in its entirety; the affirmations repeat every nine minutes. So listen for as long or as little as you like. If you listen right through, you will be exposed to five cycles of the affirmations.

Even if you fall asleep during the program the positive results will still manifest.

(Running Time approximately 40 minutes)

--()--

**Directed Healing
Program 4
(Supplementary)
Subliminal Affirmations
with Zen Ambience
(dh_affirmation_east.mp3)**

This directed healing **supplementary** program contains Zen ambience and interleaved sea and stream sounds under which a subliminal inaudible voice reiterates the affirmations that were given in the *Directed Healing* induction programs.

Listen to this program anytime, and just drift with the musical ambience (Zen) and sea sounds.

The inaudible subliminal voice will communicate with your subconscious mind and reinforce the positive affirmations that were given in the other programs.

This program does not need to be listened to in its entirety; the affirmations repeat every nine minutes. So listen for as long or as little as you like. If you listen right through, you will be exposed to five cycles of the affirmations.

Even if you fall asleep during the program the positive results will still manifest.

(Running Time approximately 40 minutes)

--()--

**Directed Healing
Program 5
(Supplementary)
Nature Empowerment
with Piano Ambience
(dh_empower_west.mp3)**

This directed healing **supplementary** program contains piano ambience and interleaved sea and stream sounds which synchronise with your subconscious mind. Consequently, the natural healing frequencies are acted upon to invoke the healing power of your subconscious mind.

Listen to this program anytime, and just drift with the musical ambience (piano) and nature sounds. This program does not need to be listened to in its entirety, and you may listen to it as often as you like and for as long as you like.

This program does **not** contain any voice or subliminal elements.

Even if you fall asleep during the program the positive results will still manifest.

(Running Time approximately 40 minutes)

--()--

**Directed Healing
Program 6
(Supplementary)
Nature Empowerment
with Zen Ambience
(dh_empower_east.mp3)**

This directed healing **supplementary** program contains Zen ambience and interleaved sea and stream sounds which synchronise with your subconscious mind. Consequently, the natural healing frequencies are acted upon to invoke the healing power of your subconscious mind.

Listen to this program anytime, and just drift with the musical ambiance (Zen) and nature sounds. This program does not need to be listened to in its entirety, and you may listen to it as often as you like and for as long as you like.

This program does **not** contain any voice or subliminal elements.

Even if you fall asleep during the program the positive results will still manifest.

(Running Time approximately 40 minutes)

--()--

**Tranquil Healing
Program 1
(Induction)**
**Voice Guided no Subliminal Elements
with Piano Ambience**
(th_voice_no_sublim_west.mp3)

This tranquil healing **induction** program uses voice, piano ambiance, and sea sounds, to deeply relax you, and then through guided visualisation your subconscious mind is empowered to invoke and augment a natural and gentle healing process.

This program does **not** contain any subliminal elements.

Listen to the program daily, especially just before going to sleep, to deeply relax and initiate the healing response that you desire.

The audible dialogue will guide you into a deep state of relaxation and through the guided visualisation you will invoke the healing power of your subconscious mind.

For optimum results this program should be listened to in its entirety.

Even if you fall asleep during the program the positive results will still manifest.

(Running Time approximately 40 minutes)

--()--

**Tranquil Healing
Program 2
(Induction)**
**Voice Guided no Subliminal Elements
with Zen Ambience**
(th_voice_no_sublim_east.mp3)

This tranquil healing **induction** program uses voice, Zen ambiance, and sea sounds, to deeply relax you, and then through guided visualisation your subconscious mind is empowered to invoke and augment a natural and gentle healing process.

This program does **not** contain any subliminal elements.

Listen to the program daily, especially just before going to sleep, to deeply relax and initiate the healing response that you desire.

The audible dialogue will guide you into a deep state of relaxation and through the guided visualisation you will invoke the healing power of your subconscious mind.

For optimum results this program should be listened to in its entirety.

Even if you fall asleep during the program the positive results will still manifest.

(Running Time approximately 40 minutes)

--()--

**Tranquil Healing
Program 3
(Induction)**

**Voice Guided with parallel Subliminal Counterpart
with Piano Ambience**

(th_voice_and_sublim_west.mp3)

This tranquil healing **induction** program uses voice, piano ambience, and sea sounds, to deeply relax you and then through guided visualisation your subconscious mind is empowered to invoke and augment a natural and gentle healing process.

Additionally there is an inaudible subliminal track which echoes the guiding voice - this subliminal approach dramatically increases the effectiveness of the program and effects direct communion with your subconscious mind.

Listen to the program daily, especially just before going to sleep, to deeply relax and to initiate the healing response that you desire.

The audible dialogue will guide you into a deep state of relaxation and through the guided visualisation you will invoke the power of your subconscious mind.

The parallel inaudible subliminal voice will greatly increase the effectiveness of the program as you are audibly guided.

For optimum results this program should be listened to in its entirety.

Even if you fall asleep during the program the positive results will still manifest.

(Running Time approximately 40 minutes)

--()--

**Tranquil Healing
Program 4
(Induction)**

**Voice Guided with parallel Subliminal Counterpart
with Zen Ambience**

(th_voice_and_sublim_east.mp3)

This tranquil healing **induction** program uses voice, Zen ambience, and sea sounds, to deeply relax you and then through guided visualisation your subconscious mind is empowered to invoke and augment a natural and gentle healing process.

Additionally there is an inaudible subliminal track which echoes the guiding voice - this subliminal approach dramatically increases the effectiveness of the program and effects direct communion with your subconscious mind.

Listen to the program daily, especially just before going to sleep, to deeply relax and to initiate the healing response that you desire.

The audible dialogue will guide you into a deep state of relaxation and through the guided visualisation you will invoke the power of your subconscious mind.

The parallel inaudible subliminal voice will greatly increase the effectiveness of the program as you are audibly guided.

For optimum results this program should be listened to in its entirety.

Even if you fall asleep during the program the positive results will still manifest.

(Running Time approximately 40 minutes)

--()--

**Tranquil Healing
Program 5
(Supplementary)
Subliminal Affirmations
with Piano Ambience
(th_affirmation_west.mp3)**

This tranquil healing **supplementary** program contains piano ambience and sea sounds under which a subliminal inaudible voice reiterates the affirmations that were given in the induction programs.

Listen to this program anytime, and just drift with the musical ambience (piano) and sea sounds.

The inaudible subliminal voice will communicate with your subconscious mind and reinforce the positive affirmations that were given in the other programs.

This program does not need to be listened to in its entirety; the affirmations repeat every nine minutes. So listen for as long or as little as you like. If you listen right through, you will be exposed to four cycles of the affirmations.

Even if you fall asleep during the program the positive results will still manifest.

(Running Time approximately 40 minutes)

--()--

**Tranquil Healing
Program 6
(Supplementary)
Subliminal Affirmations
with Zen Ambience
(th_affirmation_east.mp3)**

This tranquil healing **supplementary** program contains Zen ambience and sea sounds under which a subliminal inaudible voice reiterates the affirmations that were given in the induction programs.

Listen to this program anytime, and just drift with the musical ambience (Zen) and sea sounds.

The inaudible subliminal voice will communicate with your subconscious mind and reinforce the positive affirmations that were given in the other programs.

This program does not need to be listened to in its entirety; the affirmations repeat every nine minutes. So listen for as long or as little as you like. If you listen right through, you will be exposed to four cycles of the affirmations.

Even if you fall asleep during the program the positive results will still manifest.

(Running Time approximately 40 minutes)

--()--

**Healing Relaxation
(Special Edition)
(Induction)
Voice Guided no Subliminal Elements
with Piano Ambience
(cg_hr_initial.mp3)
(cg_hr_subsequent.mp3)**

This comprehensive healing relaxation program consisting, of initial and subsequent **inductions**, uses voice and piano ambience with sea sounds to deeply relax you and then, through guided visualisation, your subconscious mind is empowered to invoke and augment a natural and gentle healing process.

This program does **not** contain any subliminal elements.

Listen to the program daily, especially just before going to sleep, to deeply relax and initiate the healing response that you desire.

The audible dialogue will guide you into a deep state of relaxation and through the guided visualisation you will invoke the healing power of your subconscious mind.

For optimum results this program should be listened to in its entirety.

Even if you fall asleep during the program the positive results will still manifest.

(Running Time, Initial Induction Approx 58 Mins, Subsequent Induction Approx 51 Mins)

--()--

**Accelerate Healing
(Special Offer
Supplementary)
Subliminal Affirmations
with Piano Ambience
(cg_healing_sublim_west.mp3)**

This **supplementary** healing program contains piano ambience with sea sounds under which a subliminal inaudible voice reiterates the affirmations that were given in the Healing Relaxation induction program.

Listen to this program anytime, and just drift with the musical ambience (piano) and sea sounds.

The inaudible subliminal voice will communicate with your subconscious mind and reinforce the positive affirmations that were given in the Healing Relaxation induction program.

This program does not need to be listened to in its entirety; the affirmations repeat every nine minutes. So listen for as long or as little as you like. If you listen right through, you will be exposed to four complete cycles of the affirmations.

Even if you fall asleep during the program the positive results will still manifest.

(Running Time Approx 45 Mins)

--()--

**Accelerate Healing
(Special Offer)
(Supplementary)
Subliminal Affirmations
with Zen Ambience
(cg_healing_sublim_east.mp3)**

This **supplementary** healing program contains Zen ambience with stream sea sounds under which a subliminal inaudible voice reiterates the affirmations that were given in the Healing Relaxation induction program.

Listen to this program anytime, and just drift with the musical ambience (Zen) and sea sounds.

The inaudible subliminal voice will communicate with your subconscious mind and reinforce the positive affirmations that were given in the Healing Relaxation induction program.

This program does not need to be listened to in its entirety; the affirmations repeat every nine minutes. So listen for as long or as little as you like. If you listen right through, you will be exposed to four complete cycles of the affirmations.

Even if you fall asleep during the program the positive results will still manifest.

(Running Time Initial Induction Approx 45 Mins)

--()--

**The Healing Sea
(Supplementary)
Nature Empowerment
Sea with Piano Ambience
(cg_healing_sea.mp3)**

This **supplementary** healing program contains piano ambience with sea sounds, and alpha waves, which synchronise with your subconscious mind. Consequently, the natural healing frequencies are acted upon to invoke the healing power of your subconscious mind.

Listen to this program anytime, and just drift with the musical ambience (piano) and nature sounds. This program does not need to be listened to in its entirety, and you may listen to it as often as you like and for as long as you like.

This program does **not** contain any voice or subliminal elements.

Even if you fall asleep during the program the positive results will still manifest.

(Running Time Approx 58 Mins)

--()--

INTENSIVE HEALING PROGRAMS

SUMMARY

AUDIBLE/SUBLIMINAL CONTENT OVERVIEW

INTENSIVE HEALING PROGRAMS

SUMMARY

The following information summarizes the Intensive Healing Programs
(Note: Numbers in parenthesis denote the title's product number)

Warning:

**Never listen to these programs while driving
or operating a machine - they contain sounds
that enable you to become deeply and completely relaxed**

INTENSIVE HEALING PROGRAMS

The Intensive Healing Programs use nature sounds, special classical music ambience, and subliminal elements to help you focus the relaxing, transforming, and healing power of your subconscious mind

"There are NO incurable diseases!!!"

That's what Christian D Larson believes,
and that is what he presents in his 1912 book,
"How To Stay Well".

Larson contends that that all disease comes from the violation of one or more of the "laws of life", and consequently all diseases can be cured by bringing mind and body back again into harmony with those laws that have been violated - and with this in mind we have developed our selection of Special Reserve Healing Programs.

INTENSIVE HEALING

The following healing programs use voice, gentle music, and sea and stream sounds to intensify healing and cell replacement
(Running Time Approx 50 Mins)

	Audible Induction Dialogue	Audible Affirmations	Subliminal Induction Dialogue	Subliminal Affirmations	Continuous Music Ambience
<p align="center">Intensive Healing Program 1 (Induction) (A5001)</p> <p align="center">Voice Guided no Subliminal Elements with Zen Ambience (ih_voice_no_sublim.mp3)</p>	YES	YES	NO	NO	*NO (Zen)
<p align="center">Intensive Healing Program 2 (Induction) (A5002)</p> <p align="center">Voice Guided with parallel Subliminal Counterpart with Zen Ambience (ih_voice_and_sublim.mp3)</p>	YES	YES	YES	YES	*NO (Zen)

Intensive Healing Program 3 (Induction) (A5003) Subliminally Guided with no audible voice with Zen Ambience (ih_sublim_only.mp3)	NO	NO	YES	YES	YES (Zen)
Intensive Healing Program 4 (Supplementary) (A5004) Subliminal Affirmations under Sea and Zen Ambience (ih_affirmation_sea.mp3)	NO	NO	NO	YES	YES (Zen)
Intensive Healing Program 5 (Supplementary) (A5005) Subliminal Affirmations under Stream and Zen Ambience (ih_affirmation_stream.mp3)	NO	NO	NO	YES	YES (Zen)
* Music is suspended during the induction phase to allow the healing effects of the specially recorded nature sounds (unique stream, and sea) to intensify					
ENHANCED HEALING The following healing programs use voice, piano ambience, and an interleaved sea and stream sounds technique to enhance healing and cell replacement (Running Time Approx 50 Mins)					
	Audible Induction Dialogue	Audible Affirmations	Subliminal Induction Dialogue	Subliminal Affirmations	Continuous Music Ambience
Enhanced Healing Program 1 (Induction) (A5006) Voice Guided no Subliminal Elements with Piano Ambience (eh_voice_no_sublim.mp3)	YES	YES	NO	NO	YES (Piano)
Enhanced Healing Program 2 (Induction) (A5007) Voice Guided with Parallel Subliminal Counterpart with Piano Ambience (eh_voice_and_sublim.mp3)	YES	YES	YES	YES	YES (Piano)
Enhanced Healing Program 3 (Induction) (A5008) Subliminally Guided with No Audible Voice (eh_sublim_only.mp3)	NO	NO	YES	YES	YES (Piano)

Enhanced Healing Program 4 (Supplementary) (A5009) Subliminal Affirmations under Sea/Stream and Piano Ambience (eh_affirmation.mp3)	NO	NO	NO	YES	YES (Piano)
DIRECTED HEALING The following invigorating healing programs use piano and Zen ambience, and an interleaved sea and stream sounds technique to focus on healing and cell replacement (Running Time Approx 40 Mins)					
	Audible Induction Dialogue	Audible Affirmations	Subliminal Induction Dialogue	Subliminal Affirmations	Continuous Music Ambience
Directed Healing Program 1 (Induction) (A5010) Voice Guided no Subliminal Elements with Piano Ambience (dh_voice_no_sublim_west.mp3)	YES	YES	NO	NO	YES (Piano)
Directed Healing Program 2 (Induction) (A5011) Voice Guided no Subliminal Elements with Zen Ambience (dh_voice_no_sublim_east.mp3)	YES	YES	NO	NO	YES (Zen)
Directed Healing Program 3 (Supplementary) (A5012) Subliminal Affirmations - Piano Ambience (dh_affirmation_west.mp3)	NO	NO	NO	YES	YES (Piano)
Directed Healing Program 4 (Supplementary) (A5013) Subliminal Affirmations with Zen Ambience (dh_affirmation_east.mp3)	NO	NO	NO	YES	YES (Zen)
Directed Healing Program 5 (Supplementary) (A5014) Nature Empowerment with Piano Ambience (dh_empower_west.mp3)	NO	NO	NO	NO	YES (Piano)

<p>Directed Healing Program 6 (Supplementary) (A5015)</p> <p>Nature Empowerment with Zen Ambience</p> <p>(dh_empower_east.mp3)</p>	NO	NO	NO	NO	YES (Zen)
<p>TRANQUIL HEALING</p> <p>The following focused, yet gentle, healing programs use voice, piano and zen ambience, and unique sea and stream sounds to gently achieve healing and cell replacement</p> <p>(Running Time Approx 40 Mins)</p>					
	Audible Induction Dialogue	Audible Affirmations	Subliminal Induction Dialogue	Subliminal Affirmations	Continuous Music Ambience
<p>Tranquil Healing Program 1 (Induction) (A5016)</p> <p>Voice Guided no Subliminal Elements with Piano Ambience</p> <p>(th_voice_no_sublim_west.mp3)</p>	YES	YES	NO	NO	YES (Piano)
<p>Tranquil Healing Program 2 (Induction) (A5017)</p> <p>Voice Guided no Subliminal Elements with Zen Ambience</p> <p>(th_voice_no_sublim_east.mp3)</p>	YES	YES	NO	NO	YES (Zen)
<p>Tranquil Healing Program 3 (Induction) (A5018)</p> <p>Voice Guided with Parallel Subliminal Counterpart with Piano Ambience</p> <p>(th_voice_and_sublim_west.mp3)</p>	YES	YES	YES	YES	YES (Piano)
<p>Tranquil Healing Program 4 (Induction) (A5019)</p> <p>Voice Guided with Parallel Subliminal Counterpart with Zen Ambience</p> <p>(th_voice_and_sublim_east.mp3)</p>	YES	YES	YES	YES	YES (Zen)
<p>Tranquil Healing Program 5 (Supplementary) (A5020)</p> <p>Subliminal Affirmations with Piano Ambience</p> <p>(th_affirmation_west.mp3)</p>	NO	NO	NO	YES	YES (Piano)

<p>Tranquil Healing Program 6 (Supplementary) (A5021)</p> <p>Subliminal Affirmations with Zen Ambience</p> <p>(th_affirmation_east.mp3)</p>	NO	NO	NO	YES	YES (Zen)
<p>HEALING RELAXATION (Special Edition)</p> <p>The following Special Edition healing program uses voice and piano ambience with sea sounds to promote healing and cell replacement</p> <p>(Running Time Initial Induction Approx 58 Mins, Subsequent Induction Approx 51 Mins)</p>					
	Audible Induction Dialogue	Audible Affirmations	Subliminal Induction Dialogue	Subliminal Affirmations	Continuous Music Ambience
<p>Healing Relaxation (Special Edition) (Induction) (H2014)</p> <p>Vocal Induction no Subliminal Elements with Piano Ambience</p> <p>(cg_hr_initial.mp3)</p> <p>(cg_hr_subsequent.mp3)</p>	YES	YES	NO	NO	YES (Piano)
<p>ACCELERATE HEALING</p> <p>The following healing programs use inaudible voice and piano ambience with sea sounds or zen ambience with stream sounds to subliminally accelerate healing and cell replacement</p> <p>(Running Time Approx 45 Mins)</p>					
<p>Accelerate Healing Subliminal (Special Offer) (Supplementary) (S3003)</p> <p>Subliminal Affirmations with Piano Ambience</p> <p>(cg_healing_sublim_west.mp3)</p>	NO	NO	NO	YES	YES (Piano)
<p>Accelerate Healing Subliminal (Special Offer) (Supplementary) (S3003)</p> <p>Subliminal Affirmations with Zen Ambience</p> <p>(cg_healing_sublim_east.mp3)</p>	NO	NO	NO	YES	YES (Zen)
<p>HEALING SEA</p> <p>The following nature empowerment program uses sea sounds, piano ambience, and alpha waves to subliminally promote healing and cell replacement</p> <p>(Running Time Approx 58 Mins)</p>					
<p>The Healing Sea (Supplementary) (E4001)</p> <p>Nature Empowerment Sea with Piano Ambience</p> <p>(cg_healing_sea.mp3)</p>	NO	NO	NO	NO	YES (Piano)

--()--

Recommended Starting Points

Intensive Healing Program 2, Enhanced Healing Program 2, Directed Healing Program 1 or 2, or Tranquil Healing Program 1, or 2 are the recommended starting points.

The affirmations are identical in all the programs; however, the induction dialogue and the presentation of the nature sounds and musical ambience differ to promote diverse healing effects. Nevertheless, all the programs promote healing and the results can be startling.

Experiment with the Programs and see which one(s) suit you best.

Listen to the *Affirmation* or *Empowerment* programs anytime to just relax and have all the positive messages from the *Induction Programs* subliminally reinforced.

--()--

Warning:

Never listen to these programs while driving or operating a machine - they contain sounds and relaxation techniques that enable you to become deeply and completely relaxed.

Although the relaxation technique may be new to you, it is completely safe and natural.

More information and how to obtain the Healing programs can be found in the product pages of <http://campbellmgold.com>.

I hope that you will enjoy these programs and will find them of benefit.

If you have any questions, please do not hesitate to contact me.

Kind Regards,

Campbell M Gold

--()--

<http://campbellmgold.com>

01052012