

THE PORTAL SYSTEM

AN OVERVIEW

Compiled by

Campbell M Gold

(2004)

CMG Archives
<http://campbellimgold>

--()--

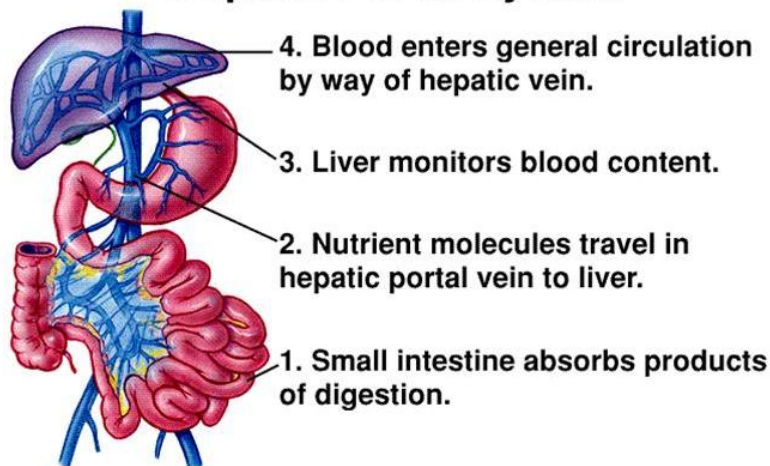
IMPORTANT

The health information contained herein is not meant as a substitute for advice from your physician, or other health professional. The following material is intended for general interest only; and it should not be used to diagnose, treat, or cure any condition whatever. If you are concerned about any health issue, symptom, or other indication, you should consult your regular physician, or other health professional. Consequently, the Author cannot accept responsibility for any individual who misuses the information contained in this material. Thus, the reader is solely responsible for all of the health information contained herein. However, every effort is made to ensure that the information in this material is accurate; but, the Author is not liable for any errors in content or presentation, which may appear herein.

--()--

Introduction

Hepatic Portal System



The hepatic portal system begins in the capillaries of the digestive organs and ends in the portal vein. Consequently, portal blood contains substances absorbed by the stomach and intestines. Portal blood is passed through the hepatic lobules where nutrients and toxins are absorbed, excreted or converted.

Restriction of outflow through the hepatic portal system can lead to portal hypertension. Portal hypertension is most often associated with cirrhosis. Individuals usually present with splenomegaly, ascites, gastrointestinal bleeding and/or portal systemic encephalopathy.

The consequences of portal hypertension are due to portal systemic anastomosis formed by the body as an attempt to bypass the obstructed liver circulation. These collateral vessels form along the falciform ligament, diaphragm, spleen, stomach and peritoneum. The collaterals find their way to the renal vein where blood drained from the digestive organs is let into the systemic circulation.

End

--()---

<http://campbellmgold.com>

27082010/1